

KARIBAN

REFERENCE : K6114

SIZES : XS_S_M_L_XL_XXL

COMPOSITION :

Fabric 1 : Polyamide 380T PA coating- 36 For Garment and packable bag 100%polyamide

Fabric 2 : Polyester 380T PA coating- 47 For Garment and packable bag 100% polyester

Fabric 1 : Polyamide 380T PA coating- 36 For inside garment and pockets 100%polyamide

Wad 1 : Padding Polyester fake down (micro broken) - 260/270 Inside body,sleeve and hood 100%polyester

WEIGHT :

Fabric 1 : 36 gsm

Fabric 2 : 47gsm

Fabric 1 : 36 gsm

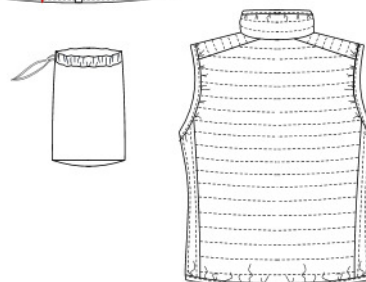
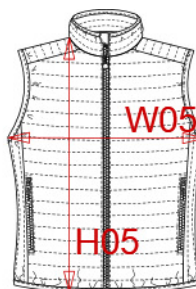
Wad 1 : 260/270 gsm

TECHNICAL DETAIL :

Coating for fake down proof

ARTICLE WEIGHT :

295 gr/pc



DESCRIPTION	COLORS	PANTONE SERIGRAPHIE
Français : Doudoune légère sans manches femme	Black	Black
English : Ladies' lightweight sleeveless down jacket	Navy	296C
Nederlands : Lichte damesbodywarmer	Light royal blue	653C
Deutsch : Leichte Damen-Steppweste	Red	200C
Español : Chaqueta acolchada ligero para mujer	Marl dark grey	-
Italiano : Piumino donna leggero senza maniche	Marl silver	-
Português : Colete de senhora acolchoado leve	White	White

MEASUREMENT						
Description	XS	S	M	L	XL	XXL
H05 Hauteur totale terminée/ Total height after sewing -5%	60	62	64	66	68	70
W05 1/2 largeur poitrine sous binding/ 1/2 chest width under binding -2%	46	49	52	55	58	61

CARE LABEL				

PACKING	
Box	5 pcs / box All sizes => L:60cm W:42cm H:10cm GW:2.5kg NW:1.5kg